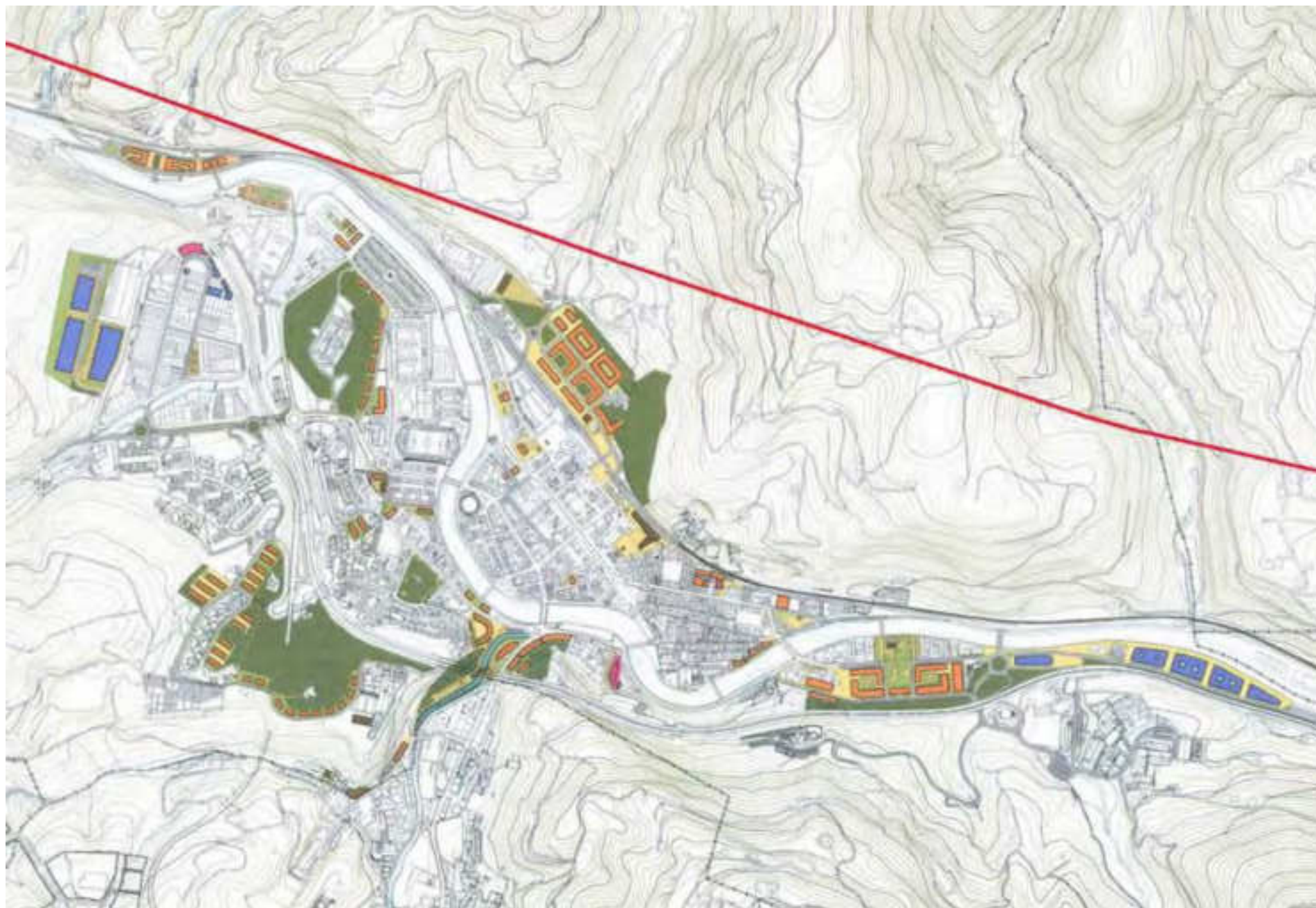
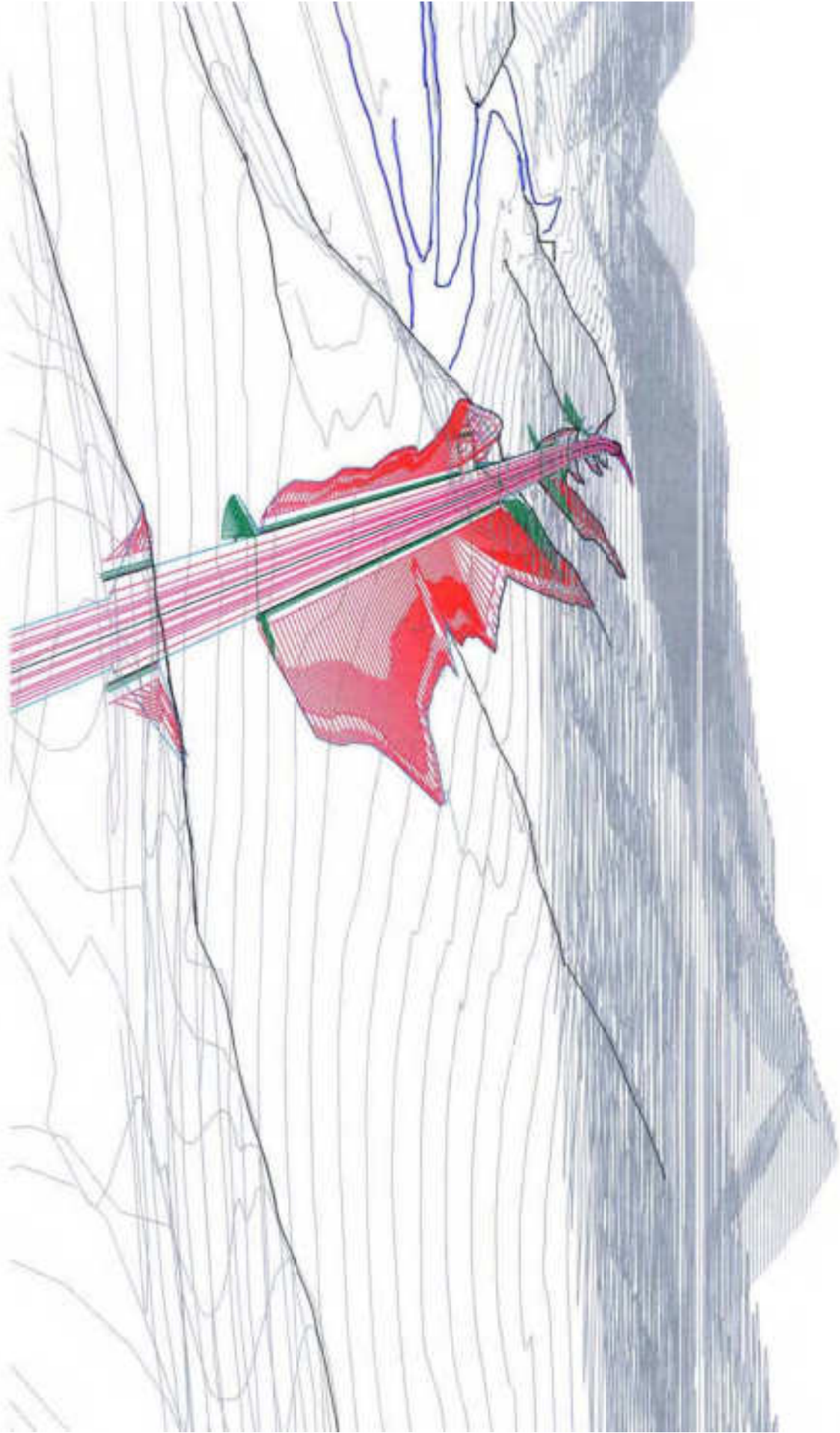


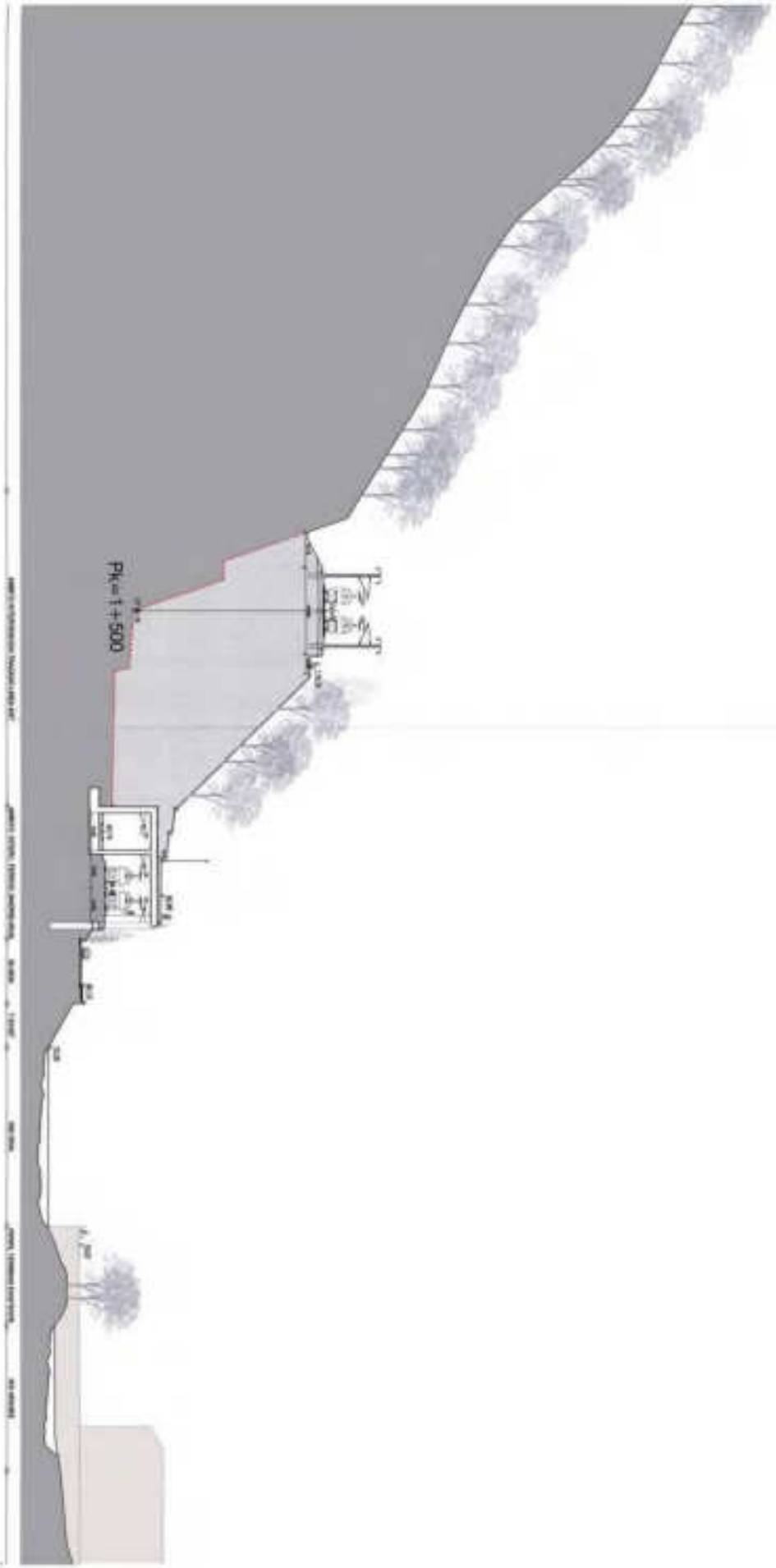
tramo ferroviario de alta velocidad en tolosa

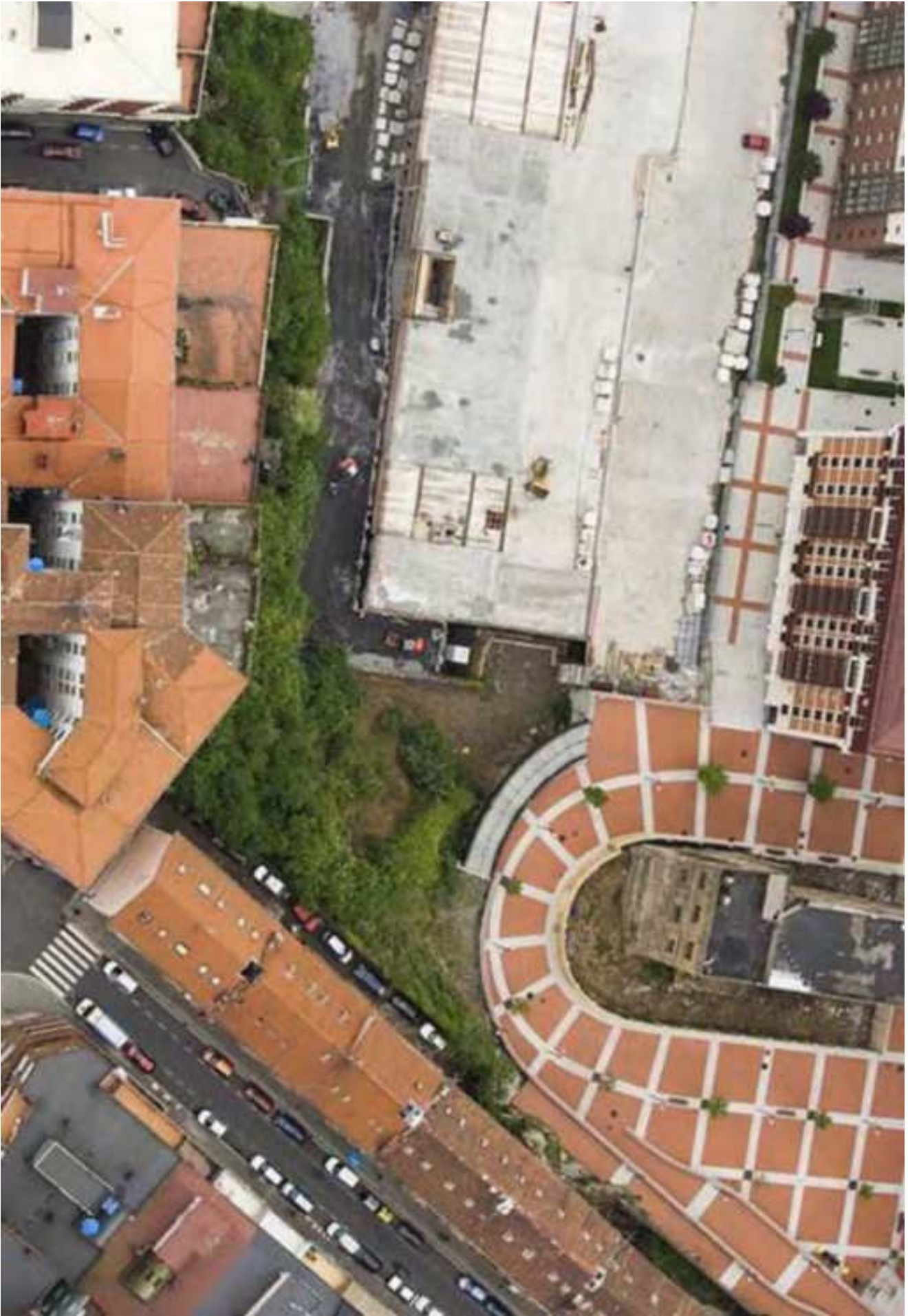


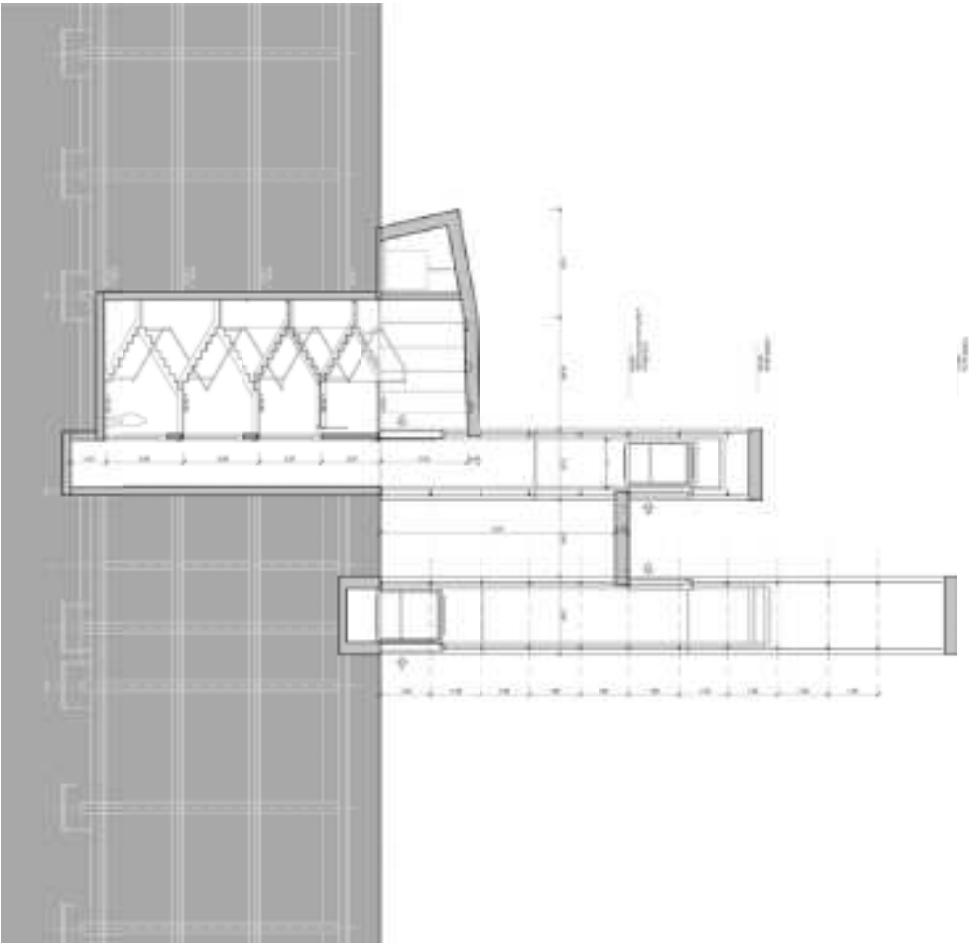
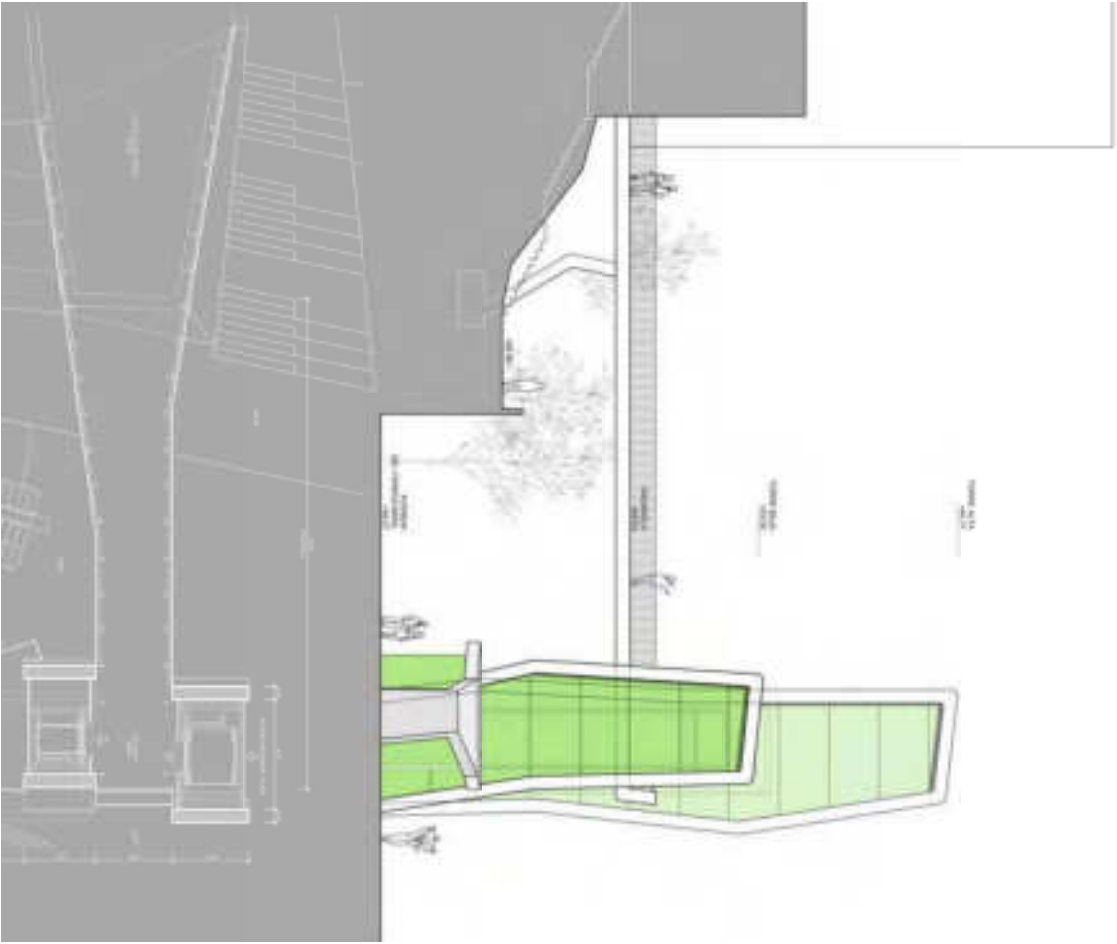


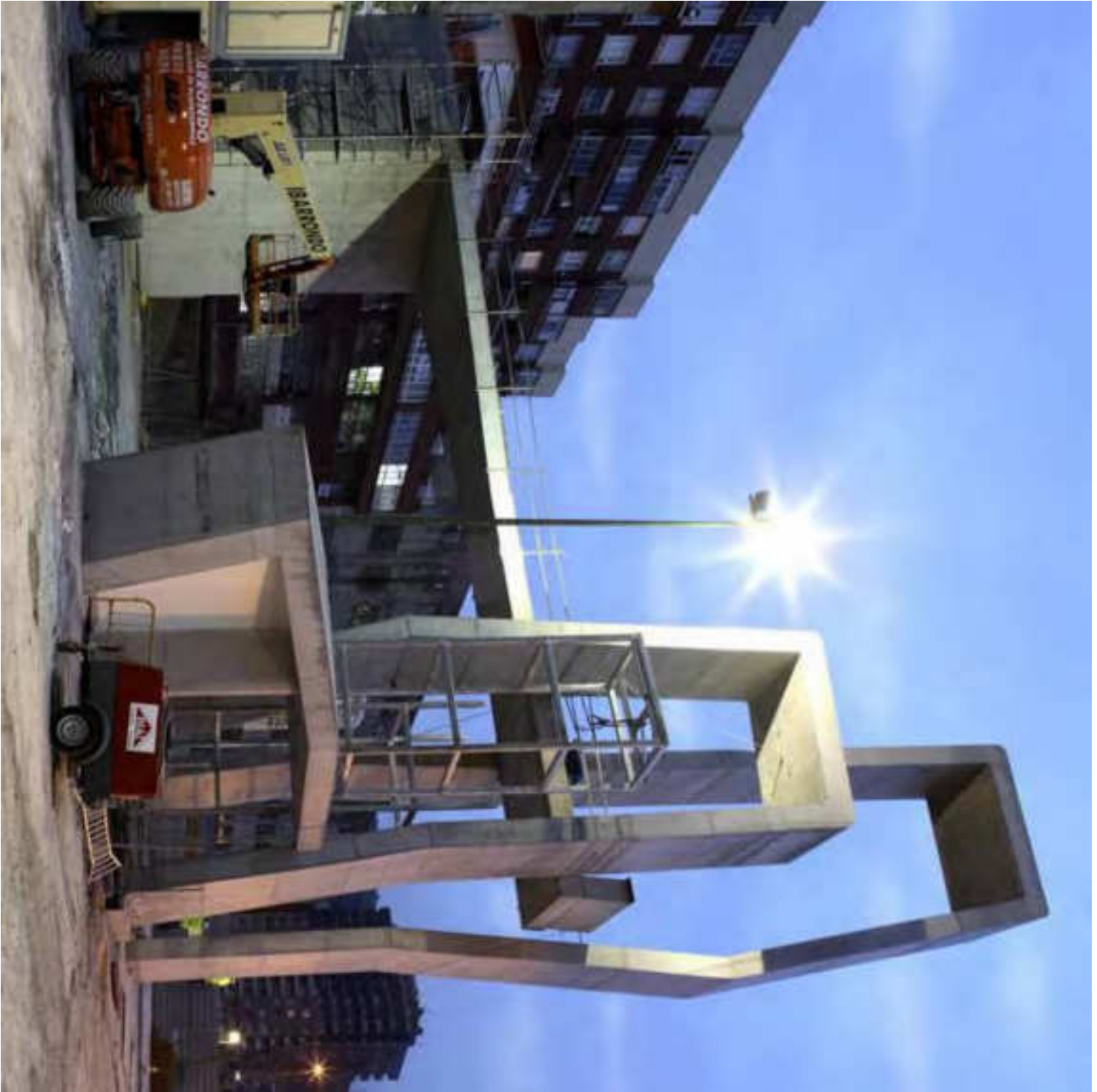










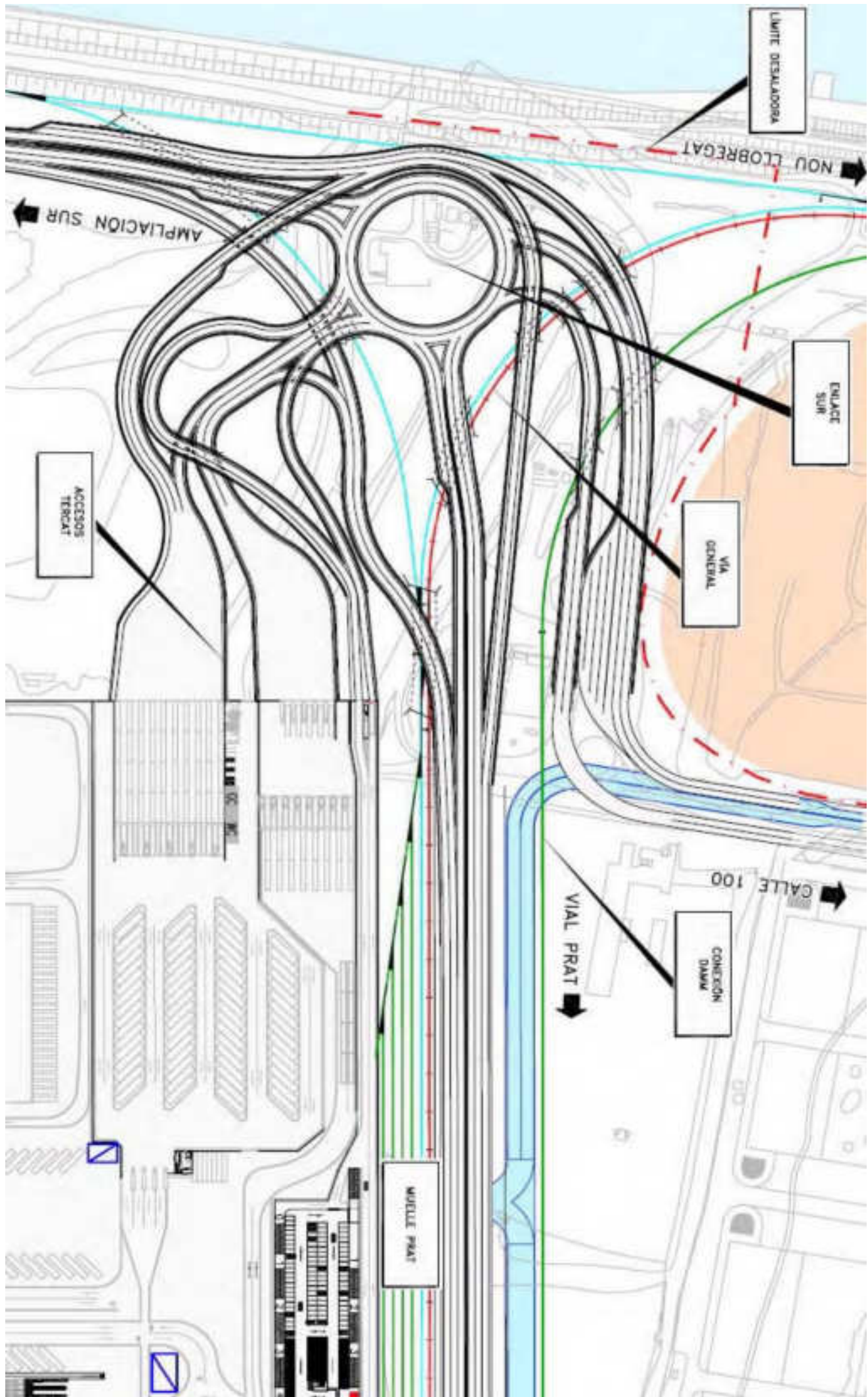


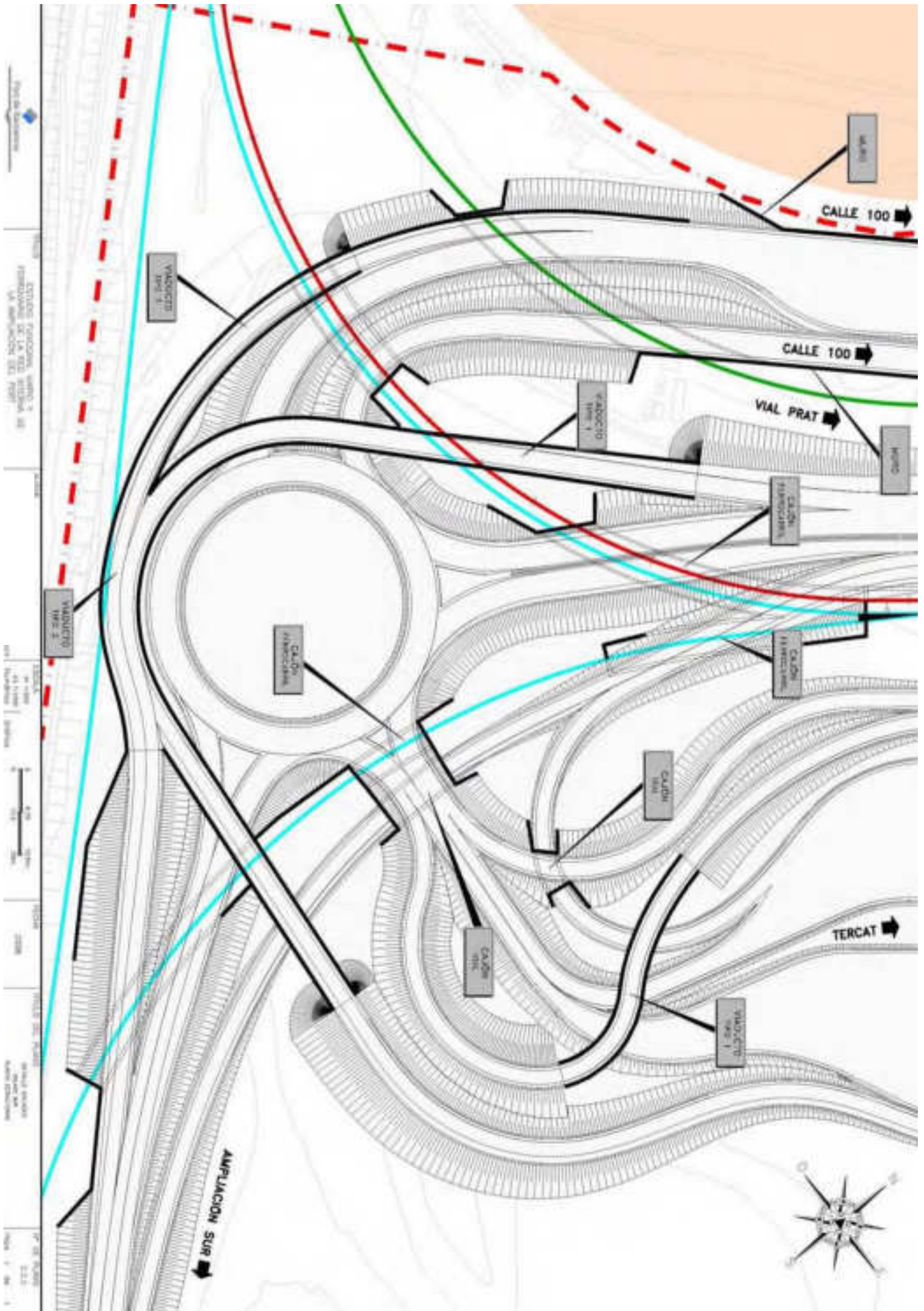




estudios previos de acceso al puerto de barcelona















ARQUITECTES ENTRE ENGINYERS
ARQUITECTOS ENTRE INGENIEROS

ANDREU ESTANY I SERRA
JAVIER RUI-WAMBA • GLORIA IRIARTE • MARIO ONZAIN



FUNDACION
ESTEYCO